

How to draw A SWIFT

with Rusland Horizons and Eleanor Chaney

YOU WILL NEED:

- A sheet of paper
- A pencil
- A rubber
- A ruler
- A pen (fineliners with waterproof ink are useful but a biro will do!)
- Watercolour paints or colouring pencils if you would like to add colour



Step 1:

Using your pencil, lightly sketch a circle for the head. I have used blue to make the stages clearer, but you should use a graphite pencil.



Step 2:

Add an oval to this to create the body shape.



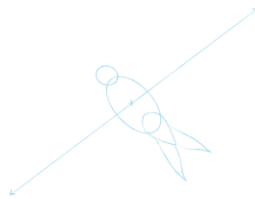
Step 3:

Roughly sketch in another oval, which is then pointed at one end, for the tail base.



Step 4:

Draw two identical triangles. Make the sides slightly curved. These will be the tail.



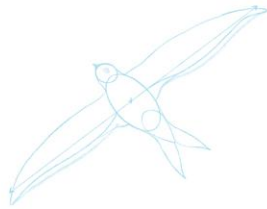
Step 5:

Using your ruler, mark the centre of the body. Then draw a straight line roughly twice the body length, equal on both sides.

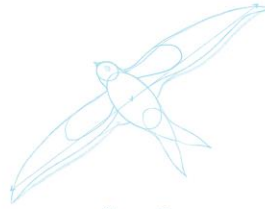


Step 6:

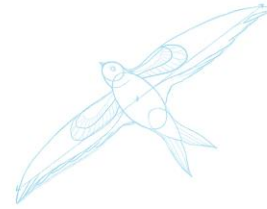
Use this as a guide to sketch in the wings of your Swift.



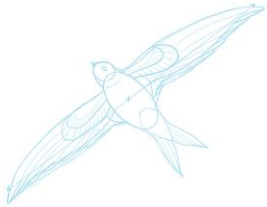
Step 6:
Draw in the beak and eye.



Step 7:
Starting at the top of the body (where the wing meets the head), draw two curved shapes as a guide for the top feathers.



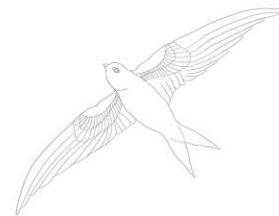
Step 8:
Sketch in the two top layers of feathers as above.



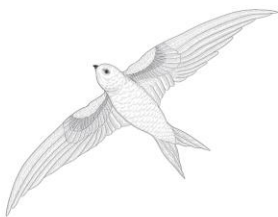
Step 9:
Now draw in the outer feathers with your pencil.



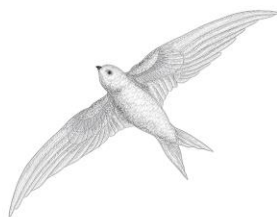
Step 10:
Make any small changes to the wing or feather shapes. At this point I decided to extend the wing tips a bit to make them more curved.



Step 11:
Go over your lines with the pen, and then gently rub out the pencil lines.



Step 12:
Use the pen to add small lines (hatching) where shadows will be.



Step 13:
Use lots of tiny dots (stippling) to add more shadows and detail to your drawing.



Step 14:
If your pen is waterproof you can paint over your drawing, if not then use colouring pencils.

Your drawing is now complete!

Remember to share your artwork and writing with www.facebook.com/RuslandHorizons/

Artwork by Eleanor Chaney www.eleanorchaney.com

© Eleanor Chaney, 2020 - For personal use only please.